



SHEFFIELD CITY COUNCIL

STREET FORCE

Public Toilets - Raising Standards in Sheffield

Presented by Andrew Staniforth

Assistant Head of Streetscene (Street Cleaning)





Sheffield 2003

A Council review of provision in 2003 identified through consultation where facilities could be improved and where older non DDA compliant underused buildings could be closed.

It defined a balanced strategy taking into account

- Usage
- Accessibility
- Condition
- Alternative provision
- Misuse
- Suitability for improvement.





Sheffield 2007

Throughout Sheffield, Street Force have 22 public toilets still operational.

5 are in the City Centre of which 2 are attended

17 are suburban

Of these, 8 are Superloos





Recent History to 2006

- Standstill Budget
- Minor investment
- Neglected facilities
- Outstanding repairs
- Lack of modernisation
- Lack of signage
- Lack of user information
- Liability for closed buildings



Wadsley Bridge – closed for 2 years due to fire damage. Now reopened





The Maintenance Problems

- Anti Social Behaviour
- Vandalism
- Public Order Offences
- Accessibility
- Public Safety
- Running cost and repairs
- Budget Allocation





Maintenance Problems



Alcohol and Drugs



Graffiti





Other Factors

- Are they in the right place?
- How many people use them?
- Are they DDA compliant?
- Are there other private facilities in the area?
- Do local people actually want them?
- Should they meet the Changing Places criteria





2006 – Aims & Objectives

24 hour service at key locations

- Facilities accessible to all at key locations
- Clean, safe, and well maintained facilities at all locations
- Easily found facilities with good signage at all locations
- User information distributed through ICT and other media
- Facilities which are not duplicated within the same area
- Facilities suitable for the location
- Sustainable provision
- Maximised provision through partnership
- The service within the budget available
- To seek investment and to sell toilet buildings closed by consultation as part of the review. To reinvest the money in upgrading existing facilities and replacing if possible.
- An accountable service





2006 – Management Restructure

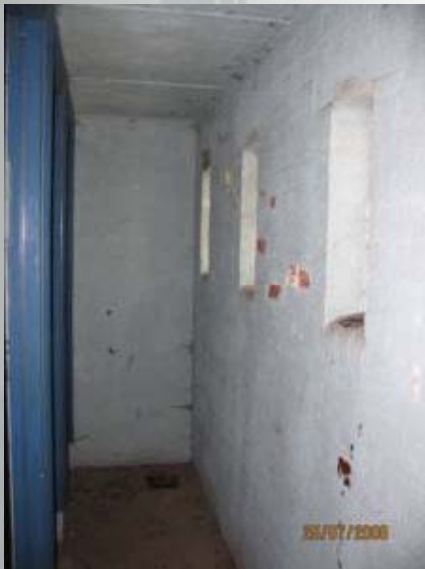
Street Force Specialist Cleaning Manager, Andrew Beevers takes over responsibility for management of Public Toilets.





First Step – Bring Back To Good Standard

- To get everything working that should work
- To bring facility back to full spec condition
- Make sure the lights are on when the facility is open
- Then to improve and update



Before



After

*Painting makes a big
difference*





Welcoming Outside Appearance

Improved exterior and grounds maintenance on sites



2005 Closed & Fire
Damaged



2007



Wadsley – Halifax Road



Inside

- Repaint with bright colours
- Anti-Graffiti Hygiene coatings
- Wallgate machines
- Improved Lighting
- Toilet Tissue Dispensers
- Information posters





Clean, Safe & Well Maintained



In line with the councils stated aim of a Cleaner, Greener, Safer City





And Smell Nice



Air fresheners have been fitted in all enclosed toilets





Septic Tanks

Improved and repaired to meet required safety standards



Before



After

Rivelin Valley





Signs





Information Technology

Sheffield City Council

Skip Links Accessibility Help Contact Us

Search this Site Enter keywords... GO

Maps News A-Z Services Jobs Pay A Bill FAQs

Home Public Toilets Public Toilet Locations

- Welcome
- Public Toilet Locations
 - Angel Street
 - Birley Moor Road
 - Bolsterstone
 - Bradfield
 - Burngreave
 - Chapelton
 - Darnall
 - Deepcar
 - Exchange Street
 - Fox House
 - Gleadless Townend
 - Halifax Road
 - Hillsborough
 - Manor Top
 - Meadowhead
 - Moorfoot
 - The Moor
 - Pond Street
 - Rivelin Valley
 - Stocksbridge
 - Stocksbridge Manchester Road
 - Town Hall
 - Woodseats

Town Hall, Sheffield, S1 2HH
telephone:

Map of Public Toilets

Chapelton Cowley Lane Public Toilet
[More Information](#)

Map Satellite Hybrid

Map data ©2007 Tele Atlas - Terms of Use

Interactive Maps



Information Technology

Skip Links Accessibility Text Only Help Widescreen Text Size: [Bigger / Normal / Smaller]




Cleaner • Greener • Safer

You are here: [Home](#) » [Roads & Transport](#) » [Maintenance \(Street Force\)](#) » [Public Toilets](#) » [List of Public Toilets](#) » Chapeltown

Chapeltown Public Conveniences

Location:

- Cowley Lane, S35.
- Adjacent to Chapeltown Park main gate and the Newton Memorial Hall.
- [Link to Map of Public Toilets.](#)



Opening Times:

- Monday to Saturday - 8.00am to 5.15pm.
- Sunday and Bank Holidays - Closed.
- Wheelchair accessible toilet - open 24 hours.

Attended:

- No.

Admission Charge:

- No.

Building:

- Ladies & Gent's - stone built traditional style.
- Wheelchair accessible toilet in the separate blue building at the side.

Facilities:

- Ladies and Gent's WC's.
- RADAR key wheelchair accessible WC.
- Automatic hand washing / drying machines in all toilets.
- Toilet tissue dispensers.

Cleaning:

- Once each day.

Search
Enter keywords...

» [A - Z of Services](#)
» [Online Services](#)

- List of Public Toilets
- Angel Street
- Birley Moor Road
- Bolsterstone
- Bradfield
- Burngreave
- Chapeltown**
- Darnall
- Deepcar
- Exchange Street
- Fox House
- Gleadless Townend
- Halifax Road
- Hillsborough
- Manor Top
- Meadowhead
- The Moor
- Moorfoot
- Pond Street
- Rivelin Valley
- Stocksbridge Manchester Road
- Stocksbridge Superloo
- Town Hall
- Woodseats

Quick Links

- [Complaints and Feedback](#)



Information

Leaflets and posters that provide information about public toilets for those without internet access.

Distribute to Area Panels, local forums and make available for the general public in Council buildings and Tourist Information.

Provide RADAR toilet locations to holiday guides and RADAR promotions booklets.

Provide coordinates for Sat-Nav systems, they can list public toilets.





Saving Resources & The Carbon Footprint

Fox House – harvested water, solar power

Wadlsey – solar power

All conveniences – electricity management systems

All conveniences – water saving systems

All conveniences – recycled toilet tissue

Fox House, Rivelin & Bradfield – Septic tanks





Community Toilet Scheme [CTS]

Makes available private premises toilets for public use.
No purchase necessary

We will make sure that all the Council's public toilets are listed on information sheets and the internet so that a complete picture can be seen by visitors and residents.

Privately CTS facilities will be included.





Replacements in Sheffield

Scheduled for December and January



Abbey Lane



Proposed Unit



Rivelin





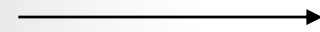
Changing Perceptions

Public toilets are changing, so must public perceptions and expectations

Superloos



Pop-Up Urinals



Off Site Constructed Units





Changing Places Toilets

These are toilets with enough space for disabled people and their carers, and the right equipment, including a height adjustable changing bench and a hoist.





New Concepts (but not in Sheffield yet!)



This is in
Basle,
Switzerland





Other Concepts (but still not in Sheffield yet!)





One That is In Sheffield

Ecclesall Woods Outdoor Composting Toilet



Turns waste into compost. No flushing, just a handful of wood shavings and sawdust





Street Force Will:

- Continue to improve the remaining facilities
- Demolish currently closed toilets or sell where possible to raise capital for upgrades and replacements
- Try to raise awareness of the need for new toilets in planning schemes where appropriate
- Address night time economy problems
- Address 'Changing Places' concerns
- Update to ensure all facilities remain DDA compliant
- Liase with and obtain feedback from customers
- Obtain feedback from Gut Trust, EnCams, Help the Aged, BTA
- Monitor usage



Sheffield Citizens and Visitors Should:

- Respect facilities, no litter, graffiti, damage, smoking and rubbish
- Make use of improved facilities. Monitoring use will decide the future
- Take ownership of their local toilet – Partnerships
- Become a member of the Community Toilet Scheme
- Acknowledge improvements, spread the word
- Report faults
- Support the work of attendants
- Provide us with feedback by whatever means. Both positive and negative comments help us to provide a better service





STREET FORCE

www.sheffield.gov.uk

Streetforce@sheffield.gov.uk

(0114) 273 4567

Presented by Andrew Staniforth

Assistant Head of Streetscene (Street Cleaning)

